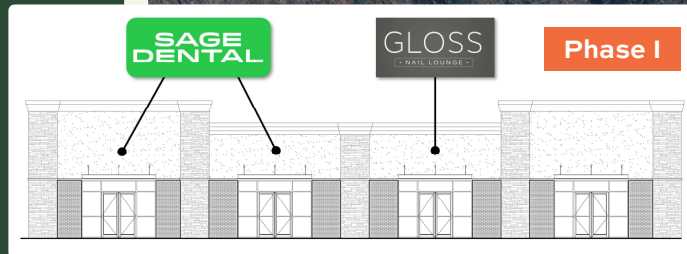


SHOPS AT WINDER HILL Phase II



LEASING INFORMATION:

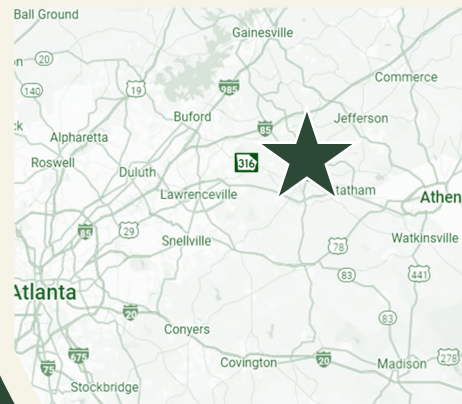
JIMMY DAVIS

770.597.0490

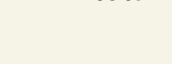
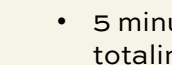
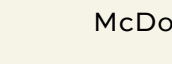
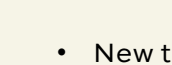
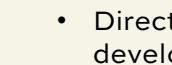
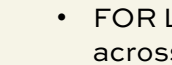
jimmy.davis@bridger-properties.com



BRIDGER
PROPERTIES



FUTURE
MEDICAL
BUILDING



COMING SOON!

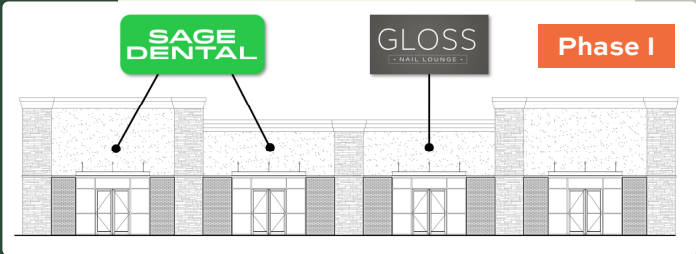



NOW OPEN!





- FOR LEASE – 9,940 SF Multi-Tenant Building located across from the Publix-Anchored Shopping Center at GA Highway 53 and GA Highway 11 in Winder, GA.
- Directly behind the center will be a new residential development, consisting of 101 Single-Family Homes.
- New tenants opening soon at the intersection include McDonald's, Sage Dental, and Gloss Nails Lounge.
- 5 minutes away is Winder-Barrow HS and Russel MS, totaling 2,718 Students and 174 Faculty and Staff.

SHOPS AT WINDER HILL Phase II



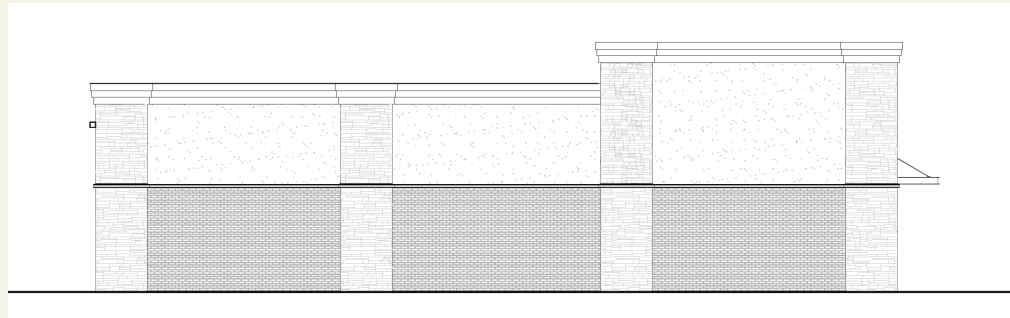
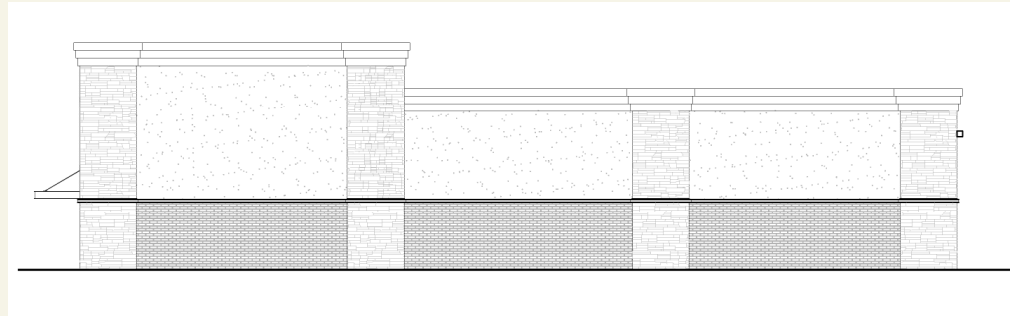
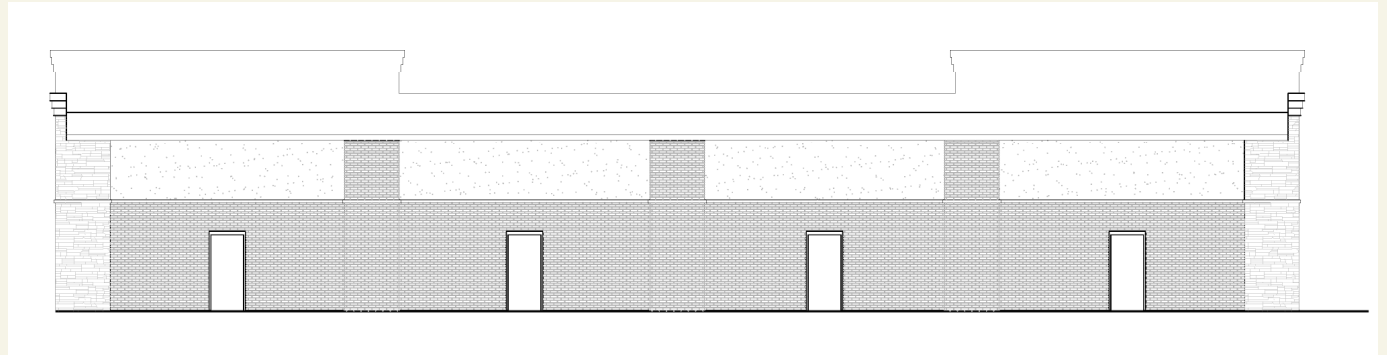
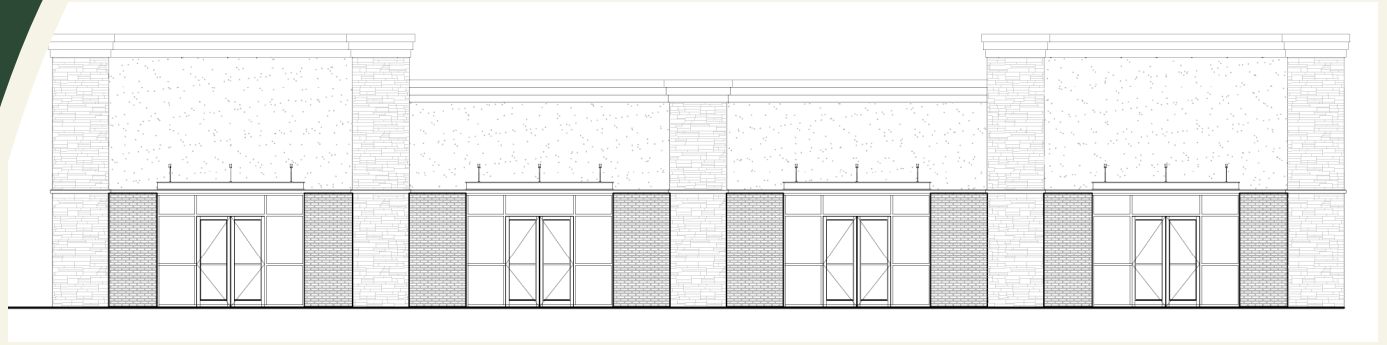
 Total Population
3 MILE: 23,700
5 MILE: 44,711
10 MILE: 161,563

 Total Households
3 MILE: 9,563
5 MILE: 15,610
10 MILE: 54,164

 Average HH Incomes
3 MILE: \$76,414
5 MILE: \$84,144
10 MILE: \$98,342

 Total Employees
3 MILE: 9,492
5 MILE: 12,941
10 MILE: 33,582

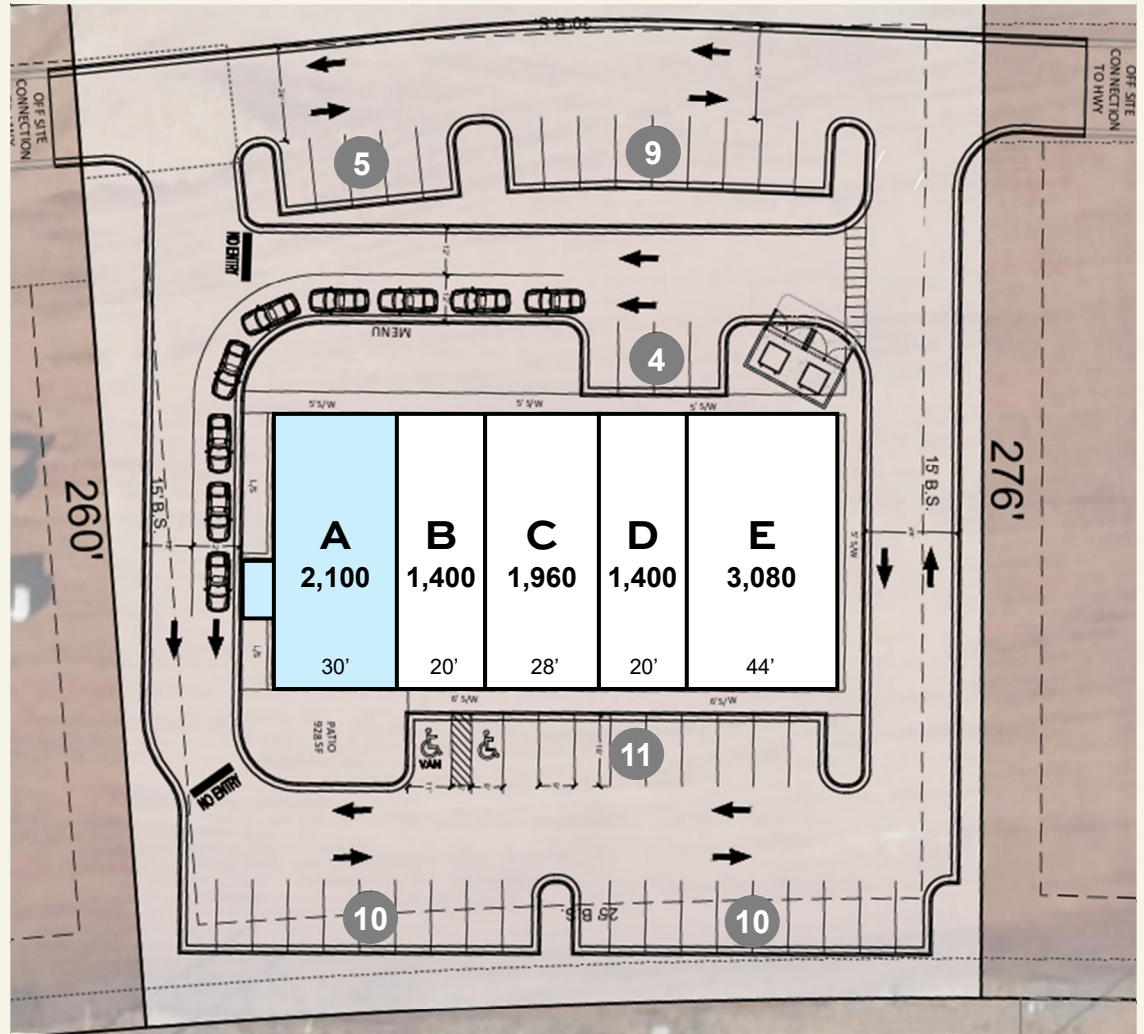
SHOPS AT WINDER HILL Phase II



ESTD  2020

BRIDGER
PROPERTIES

SHOPS AT WINDER HILL Phase II



GA HIGHWAY 53

LEASING INFORMATION:

JIMMY DAVIS

770.597.0490

jimmy.davis@bridger-properties.com



BRIDGER
PROPERTIES

UNIT	TENANT	DIMENSION	SIZE
A	Deal Pending	30' x 70'	2,100
B	AVAILABLE	20' x 70'	1,400
C	AVAILABLE	28' x 70'	1,960
D	AVAILABLE	20' x 70'	1,400
E	AVAILABLE	44' x 70'	3,080
TOTAL:			9,940