

SHOPS AT WINDER HILL

GA Highway 53 & GA Highway 11
Winder, Georgia 30680

Barrow County



LEASING INFORMATION

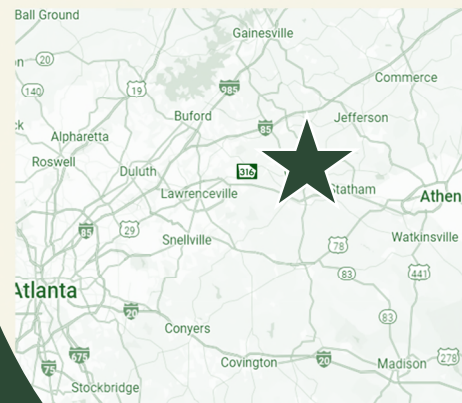
JIMMY DAVIS

770.597.0490

jimmy.davis@bridger-properties.com



BRIDGER
PROPERTIES



- FOR LEASE – 8,400 SF Multi-Tenant Building located across from the new Publix-Anchored Shopping Center at GA Highway 53 and GA Highway 11 in Winder, Georgia.
- Directly behind the center will be a new residential development, consisting of 101 Single-Family Homes.
- Parcel is adjacent to Northeast Georgia Medical Center, consisting of 56 beds and 200+ Physicians and Staff.
- 5 minutes away is Winder-Barrow HS and Russel MS, totaling 2,718 Students and 174 Faculty and Staff.



SHOPS AT WINDER HILL



**Total
Population**

3 MILE: 23,700

5 MILE: 44,711

10 MILE: 161,563



**Total
Households**

3 MILE: 9,563

5 MILE: 15,610

10 MILE: 54,164



**Average
HH Incomes**

3 MILE: \$76,414

5 MILE: \$84,144

10 MILE: \$98,342



**Total
Employees**

3 MILE: 9,492

5 MILE: 12,941

10 MILE: 33,582

ESTD 2020

BRIDGER
PROPERTIES

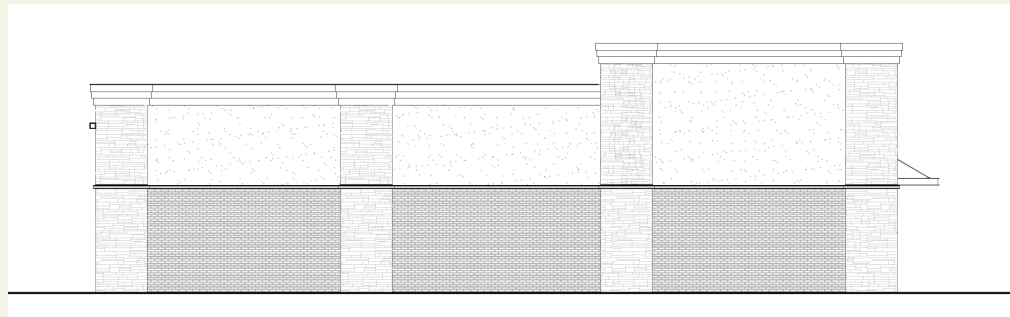
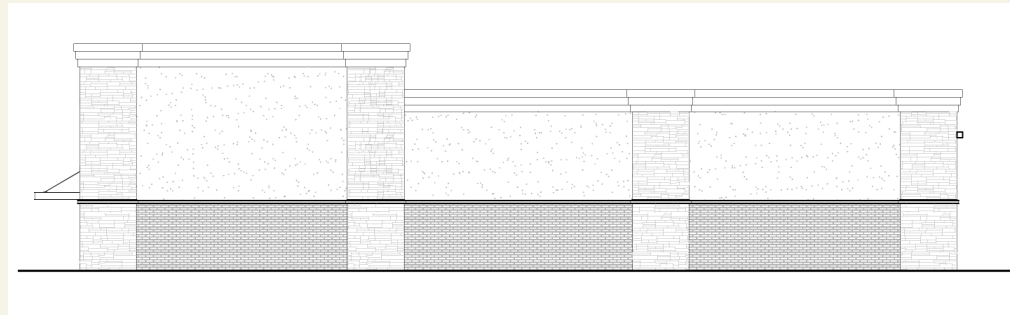
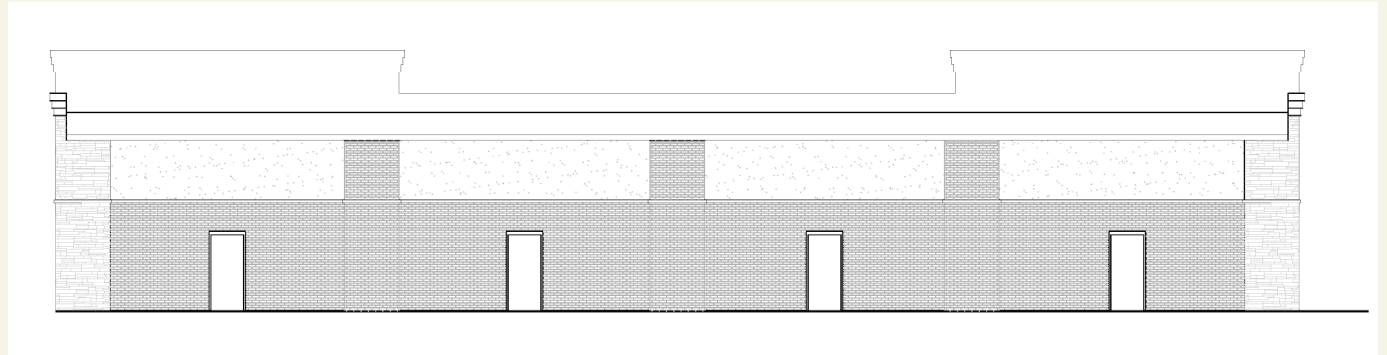
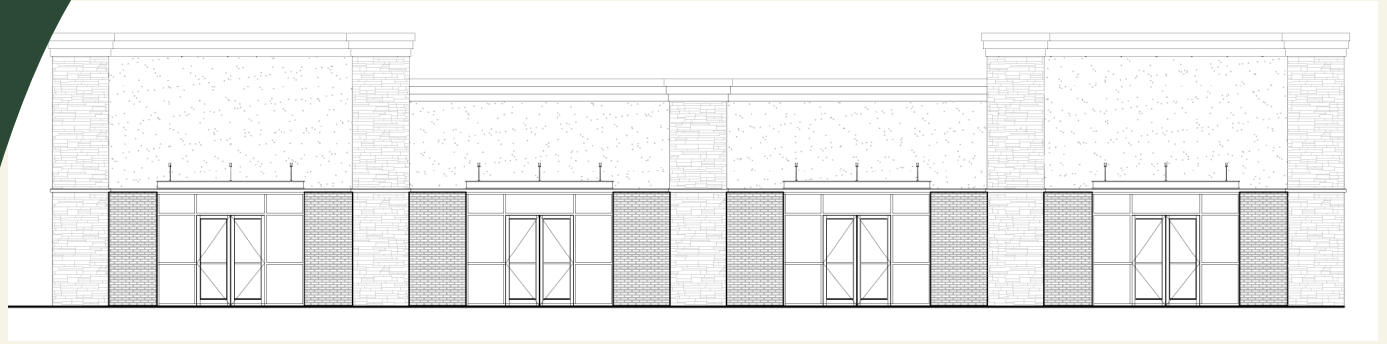
SHOPS AT WINDER HILL



ESTD  2020

BRIDGER
PROPERTIES

SHOPS AT WINDER HILL



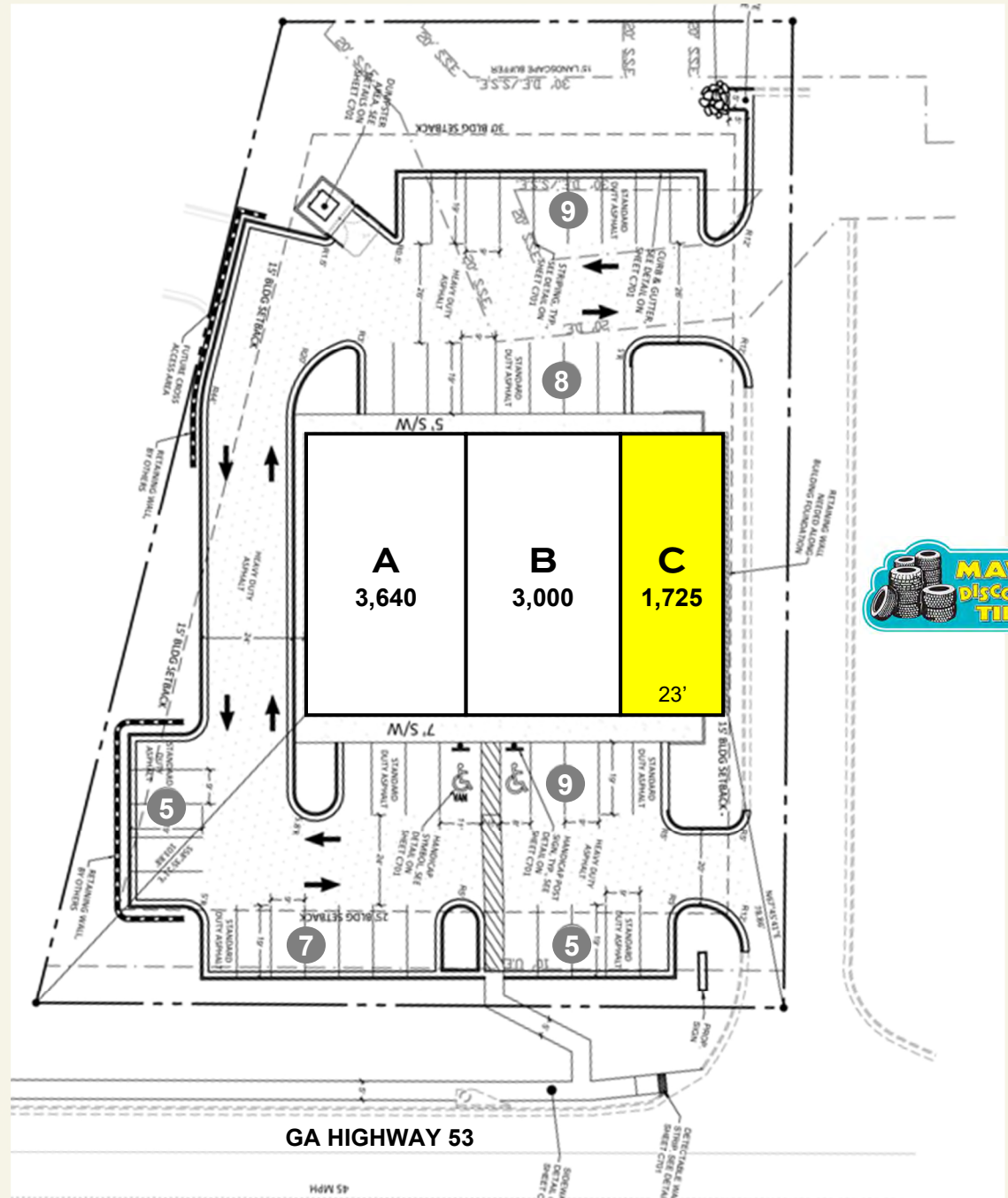
ESTD  2020

BRIDGER
PROPERTIES

SHOPS AT WINDER HILL

TENANT KEY

UNIT	TENANT	DIMENSION	SIZE
A	Deal Pending	49' x 75'	3,675
B	Glosse Nails	40' x 75'	3,000
C	AVAILABLE	23' x 75'	1,725
TOTAL:			8,400



ESTD 2020

BRIDGER
PROPERTIES