

SHOPS AT WINDER HILL

GA Highway 53 & GA Highway 11
Winder, Georgia 30680

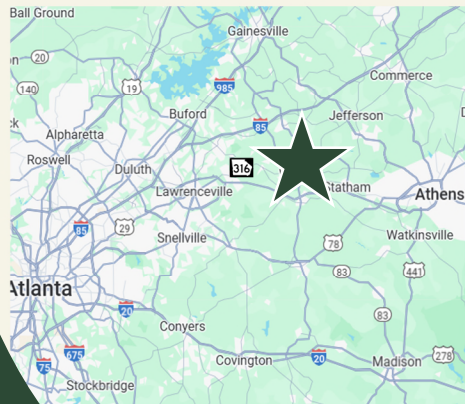
Barrow County

101 New
Single-Family
Homes



LEASING INFORMATION

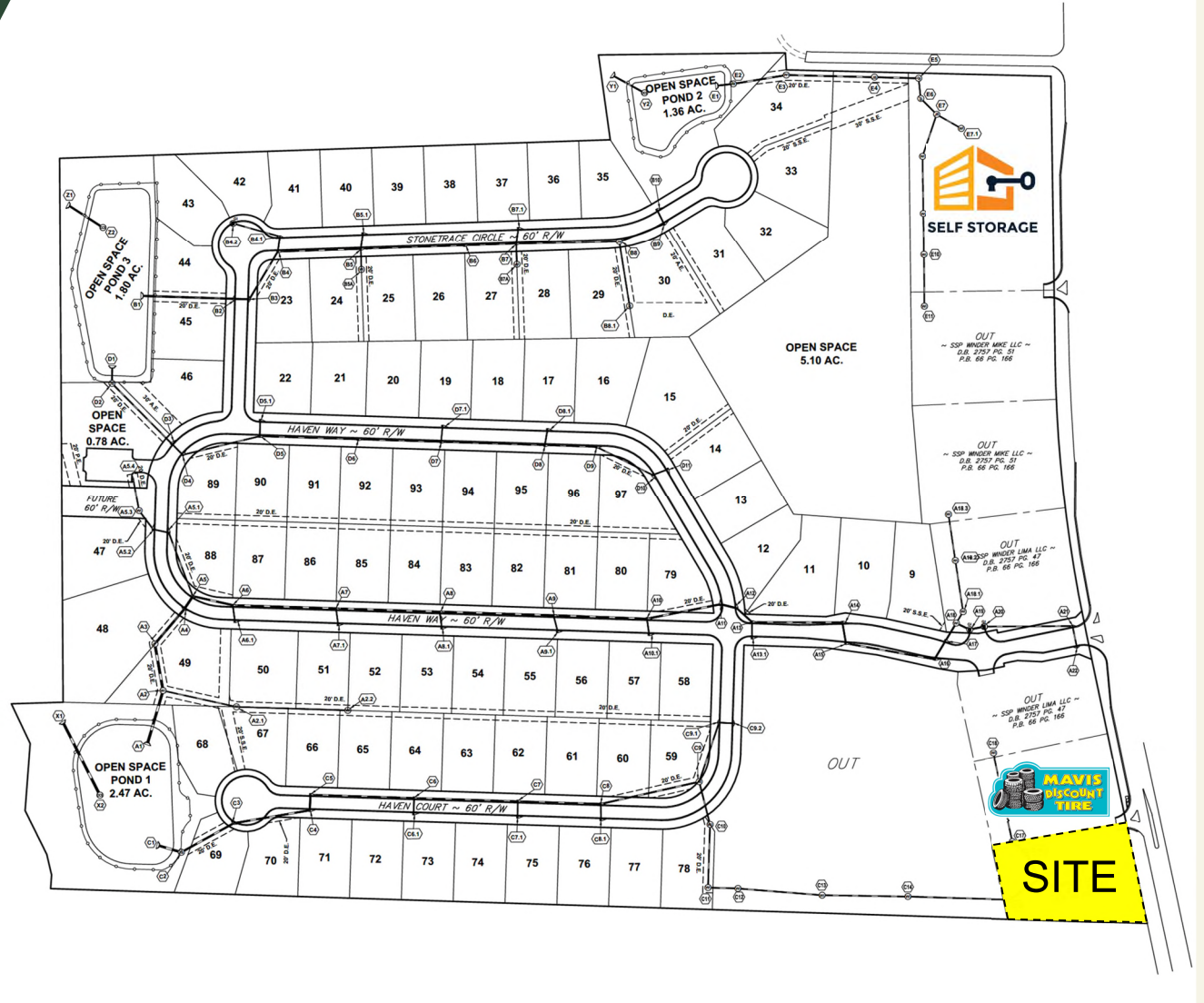
JIMMY DAVIS
770.597.0490
jimmy.davis@bridger-properties.com



- FOR LEASE – 8,190 SF Multi-Tenant Building located across from the new Publix-Anchored Shopping Center at GA Highway 53 and GA Highway 11 in Winder, Georgia.
- Directly behind the center will be a new residential development, consisting of 101 Single-Family Homes.
- Parcel is adjacent to Northeast Georgia Medical Center, consisting of 56 beds and 200+ Physicians and Staff.
- 5 minutes away is Winder-Barrow HS and Russel MS, totaling 2,718 Students and 174 Faculty and Staff.

SHOPS AT WINDER HILL

Residential Site Plan and Area Demographics



Total Population

3 MILE: 23,700

5 MILE: 44,711

10 MILE: 161,563



Total Households

3 MILE: 9,563

5 MILE: 15,610

10 MILE: 54,164



Average HH Incomes

3 MILE: \$76,414

5 MILE: \$84,144

10 MILE: \$98,342



Total Employees

3 MILE: 9,492

5 MILE: 12,941

10 MILE: 33,582

ESTD 2020

BRIDGER
PROPERTIES

SHOPS AT WINDER HILL

Retail Site Plan

Publix®



Northeast Georgia Health System



ESTD 2020

BRIDGER
PROPERTIES

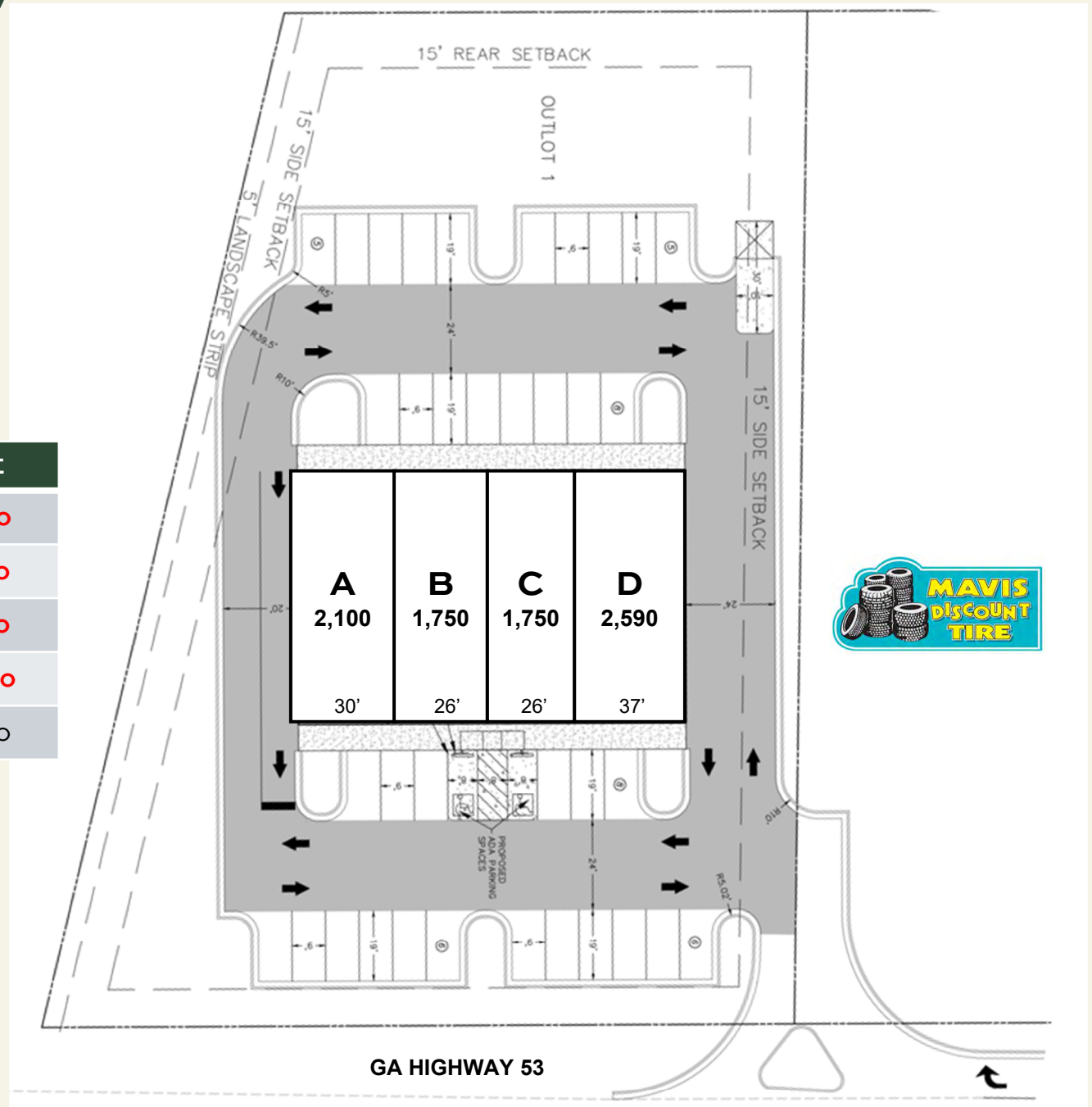


SHOPS AT WINDER HILL

Project Site Plan

TENANT KEY

UNIT	TENANT	DIMENSION	SIZE
A	AVAILABLE	30' x 70'	2,100
B	AVAILABLE	26' x 70'	1,750
C	AVAILABLE	26' x 70'	1,750
D	AVAILABLE	37' x 70'	2,590
TOTAL:			8,190



ESTD 2020

BRIDGER
PROPERTIES