

# SHOPS AT WINDER HILL

GA Highway 53 & GA Highway 11  
Winder, Georgia 30680  
Barrow County



## LEASING INFORMATION

**JIMMY DAVIS**  
770.597.0490  
jimmy.davis@bridger-properties.com



- FOR LEASE – 8,400 SF Multi-Tenant Building located across from the new Publix-Anchored Shopping Center at GA Highway 53 and GA Highway 11 in Winder, Georgia.
- Directly behind the center will be 89 Single-Family Homes and a 123-Unit Senior Living Facility.
- Parcel is adjacent to Northeast Georgia Medical Center, consisting of 56 beds and 200+ Physicians and Staff.
- 5 minutes away is Winder-Barrow HS and Russel MS, totaling 2,718 Students and 174 Faculty and Staff.

# SHOPS AT WINDER HILL



**Total Population**

3 MILE: 23,700

5 MILE: 44,711

10 MILE: 161,563

**Total Households**

3 MILE: 9,563

5 MILE: 15,610

10 MILE: 54,164

**Average HH Incomes**

3 MILE: \$76,414

5 MILE: \$84,144

10 MILE: \$98,342

**Total Employees**

3 MILE: 9,492

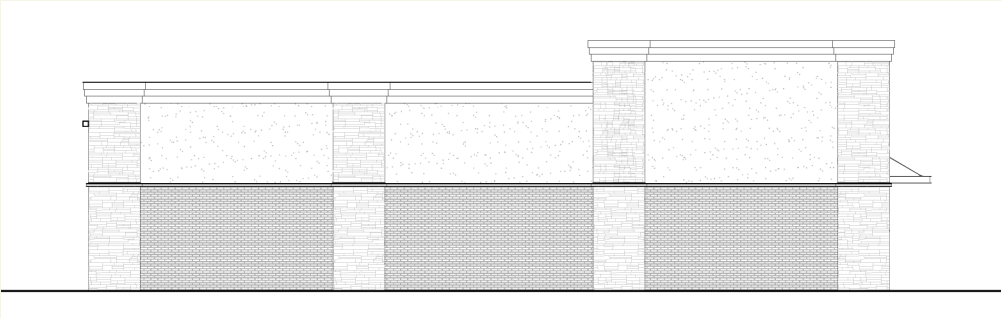
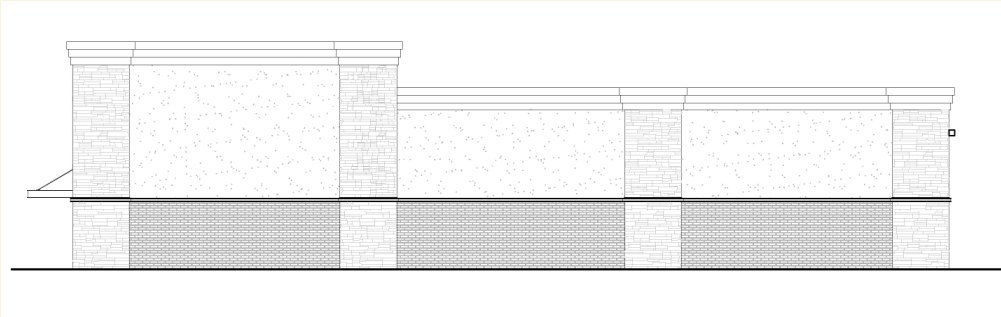
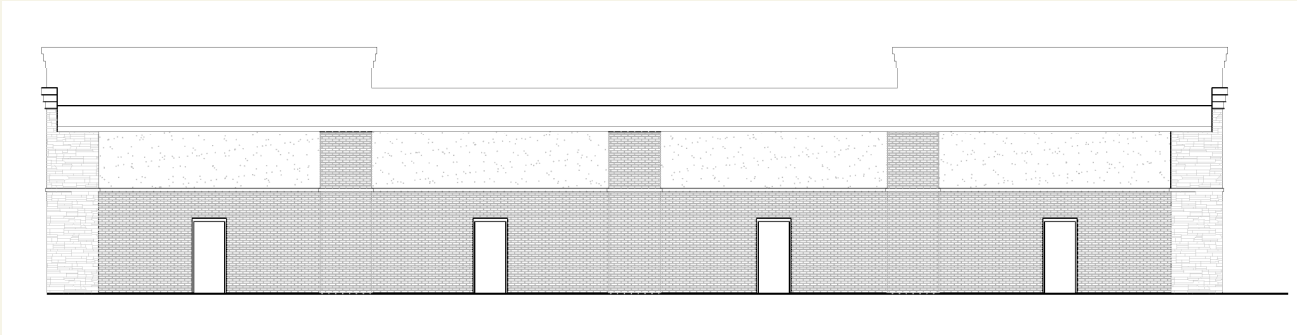
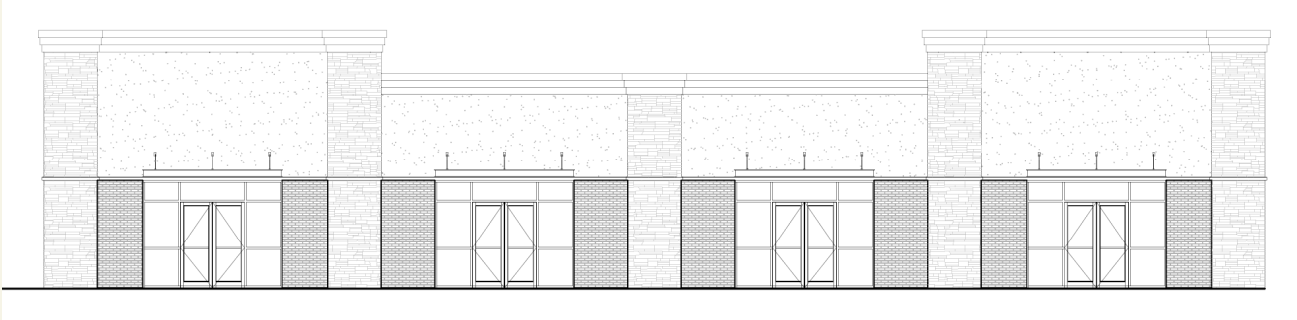
5 MILE: 12,941

10 MILE: 33,582

ESTD 2020

**BRIDGER**  
PROPERTIES

# SHOPS AT WINDER HILL



ESTD 2020

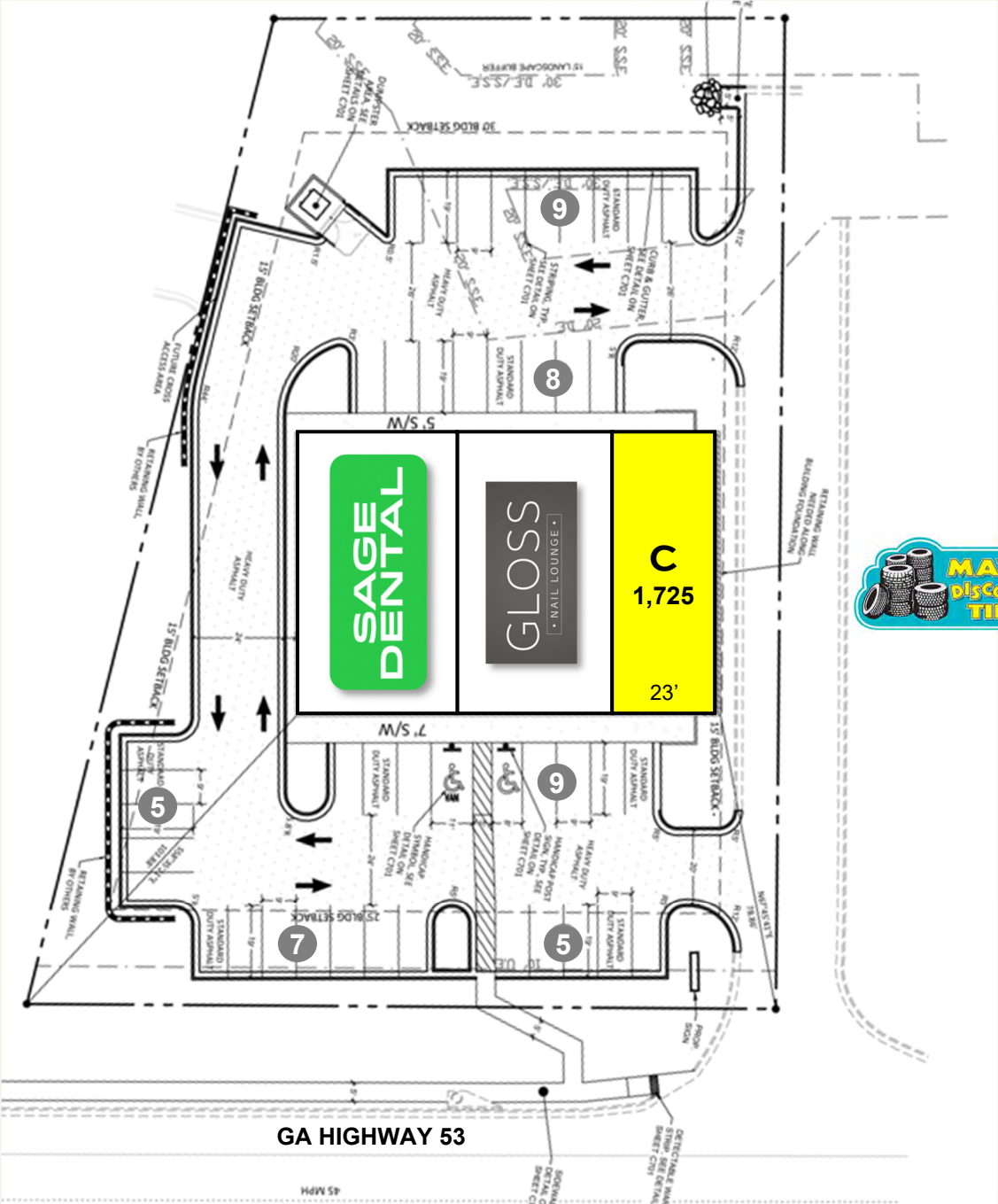


**BRIDGER**  
PROPERTIES

# SHOPS AT WINDER HILL

## TENANT KEY

UNIT	TENANT	DIMENSION	SIZE
A	Sage Dental	49' x 75'	3,675
B	Glosse Nails	40' x 75'	3,000
<b>C</b>	<b>AVAILABLE</b>	<b>23' x 75'</b>	<b>1,725</b>
TOTAL:			8,400



ESTD 2020

**BRIDGER**  
PROPERTIES