

337  
ELIZABETH ST.



ATLANTA | INMAN PARK | ATLANTA  
INMAN PARK | ATLANTA

AVAILABILITY

5,960 SF OFFICE SPACE

736 - 2,066 SF RESTAURANT SPACE

ESTD 2020

**BRIDGER**  
PROPERTIES



## THE NEIGHBORHOOD

Located on the eastside of town, the **INMAN PARK** neighborhood was Atlanta's first planned suburb. With several restaurants & retail shops, Inman Park is one of Atlanta's most popular neighborhoods. The Atlanta Beltline runs directly through the neighborhood generating heavy foot traffic and busy streets. On any given day of the week, you might find locals and tourists alike mingling for brunch at sidewalk cafes, sipping cocktails at lively night spots and browsing the clothing racks on display outside.





# THE LOCATION



An aerial map of the Inman Park neighborhood in Atlanta, Georgia, with various business and transit callouts. The map is overlaid with a white outline of the neighborhood and a green line representing a transit route. Key callouts include:

- North Avenue** (top boundary)
- Ponce City Market** (top center)
- Botiwalla**, *Minero's*, *Atrium*, *HoneySuckle*, **H&F BURGER** (top left)
- New Realm Brewing Company** (top right)
- Poncey Highland** (top right)
- two URBAN LICKS** (top right)
- Atlanta BeltLine** (center)
- 337 ELIZABETH ST.** (center right, highlighted in yellow)
- Old Fourth Ward** (center)
- Freedom Parkway** (center)
- N. Highland Ave.** (bottom center)
- Highland Ave.** (bottom left)
- PURE** (bottom center)
- FRITTI** (bottom right)
- VICTORY VSB 4216 Sandwich Bar** (bottom right)
- SAVI PROVISIONS** (bottom right)
- INMAN PARK** (bottom right)
- INMAN QUARTER** (bottom right)
- bartaco**, **BEETLECAT**, **Orangetheory FITNESS**, **barcelona**, **Bread & Butterfly** (bottom right)
- delbar** (bottom center)
- Kevin Rathbun STEAK** (bottom center)
- Krog Street Market** (bottom center)
- jenie's**, **Superica**, **Fred's MEAT & BREAD**, **Ticonderoga Club** (bottom center)
- SPX ALLEY** (bottom left)
- Nina & Rafi**, **HAWKERS**, **Pour TAPROOM** (bottom left)
- BRIDGER PROPERTIES** (bottom right)



## OFFICE SPACE

SIZE : 5,960 SF  
AVAILABLE : IMMEDIATELY  
PARKING : ON-STREET

EXISTING FURNITURE CAN BE INCLUDED

## RESTAURANT/BAR SPACE

SIZE : 736 - 2,066 SF

STEPS FROM THE  
ATLANTA BELTLINE



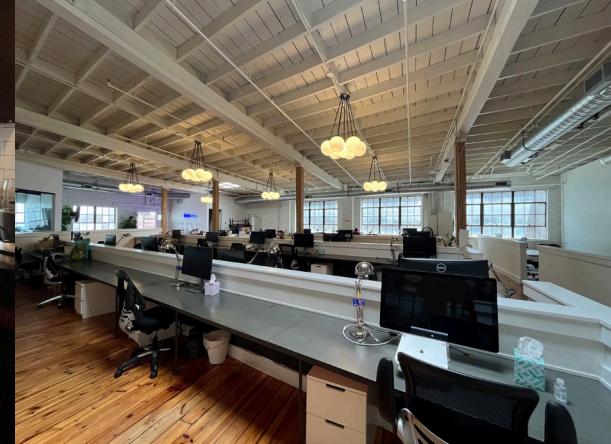
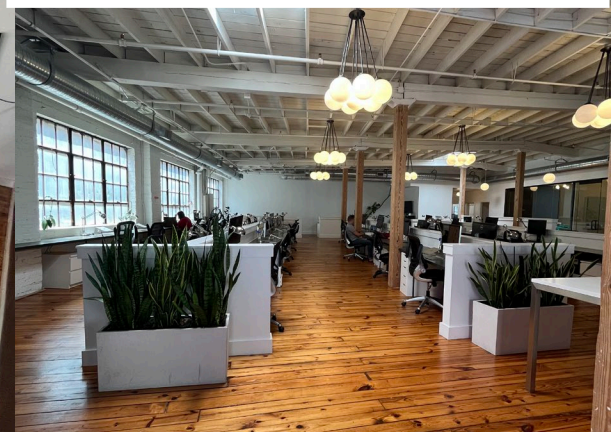
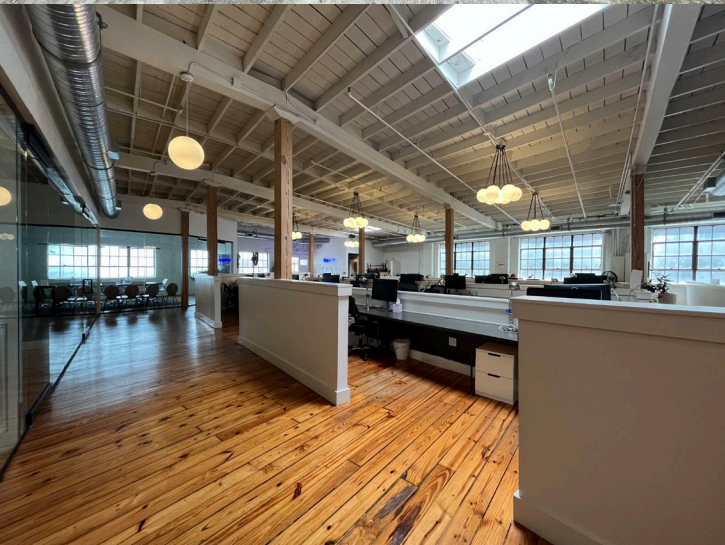




**OFFICE SPACE**

SIZE : 5,960 SF  
AVAILABLE : IMMEDIATELY  
PARKING : ON-STREET

EXISTING FURNITURE CAN BE INCLUDED







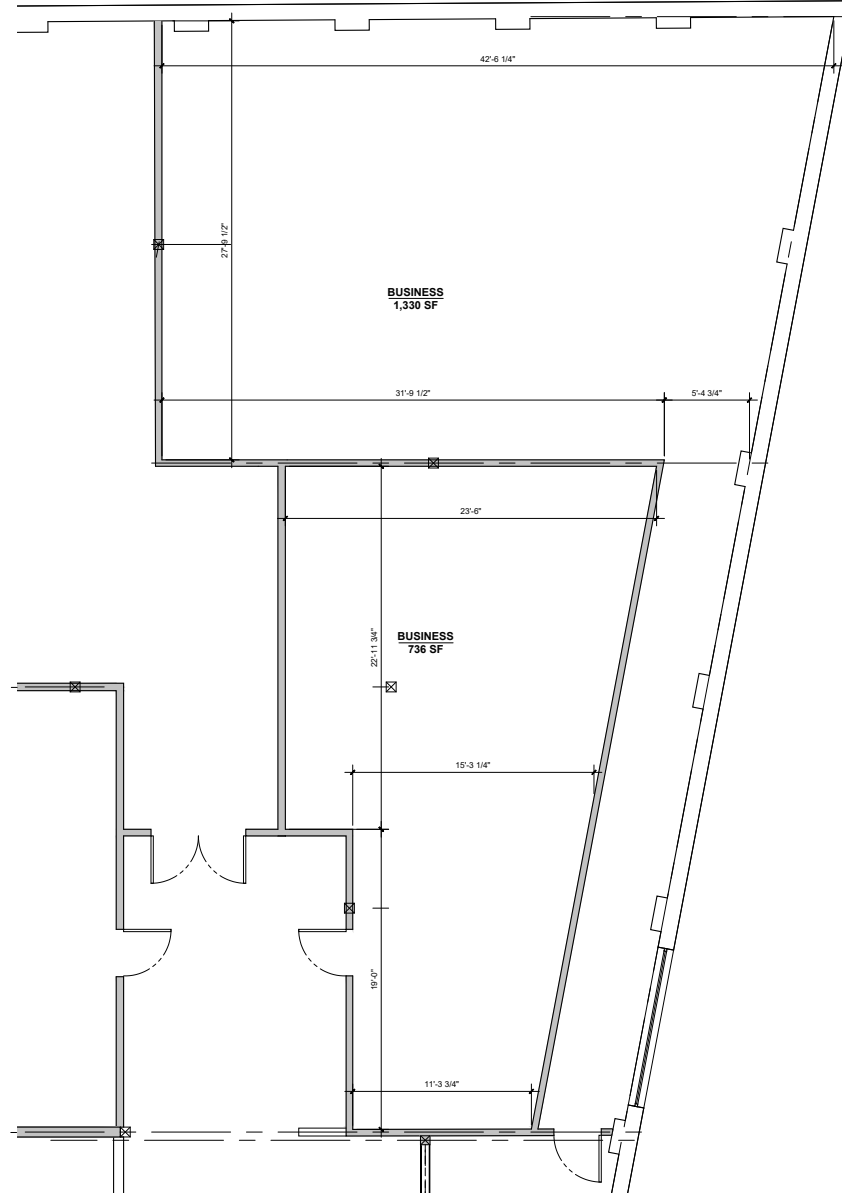
# RETAIL SITE PLAN

## FLOOR PLAN GENERAL NOTES

GENERAL NOTES:	
<ul style="list-style-type: none"> <li>• ALL DIMENSIONS ARE FROM FINISH FACE OF DRYWALL (INTERIOR), FINISH MATERIAL (EXTERIOR AND EXISTING), OR CENTERLINE OF STEEL - U.N.O.</li> <li>• ALL WALL TYPES TO BE P-1 UNLESS NOTED OTHERWISE</li> </ul>	

## FLOOR PLAN LEGEND

SYMBOL	DESCRIPTION
	EXISTING CONSTRUCTION TO REMAIN
	NEW CONSTRUCTION



Size: 736-2066 sf





# LOADING DOCK

LOOKING INTO THE COURTYARD FROM ELIZABETH ST.



ENTRANCE  
HERE  
←





CONTACT

**SHELBI BODNER**

[shelbi.bodner@bridger-properties.com](mailto:shelbi.bodner@bridger-properties.com)

**770.778.0197**

